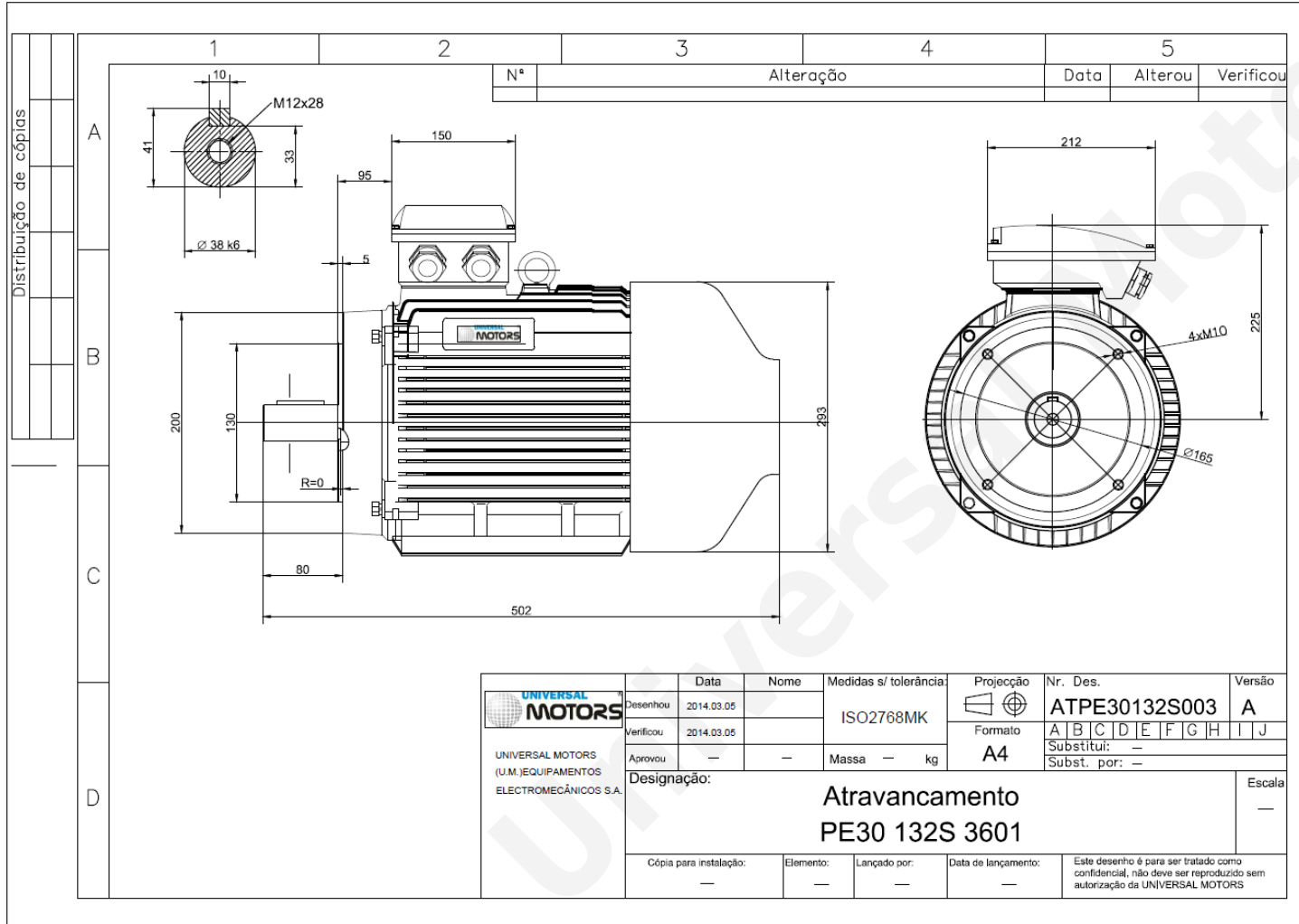


TECHNICAL DATA

Three Phase Electric Motors - Cast Iron Frame
 PE30 132 S2 2 IE3
 7.5 kW / 10 Cv
 2940 RPM



Motor type:	PE30 132 S2 2 IE3
Output:	7.5 kW / 10 Cv
Speed (min ⁻¹):	2940 RPM
Frequency:	50 Hz
Voltage:	2940 V
Current:	13.7 A
Power factor (Cos Ø):	0.88
Poles:	2
Insulation class:	F
Temperature rise Class:	B
Efficiency 50%:	89.6 %
Efficiency 75%:	90.9 %
Efficiency 100%:	90.3 %
Torque:	24 N.m
Tstarting/Tnominal:	2.0
Istarting/Inominal:	7.9
Tmaximum/Tnominal:	2.3
Noise:	79 Db(A)
Weight:	75 Kg
Bearing DE:	6308 2Z C3
Bearing NDE:	6208 2Z C3

Regime - S1

Altitude - 1000m

Environment Temperature - 40°C

CONTACTS:

UNIVERSAL MOTORS Tel: +351 252 299 080
 Rua de São Brás,745 Fax: +351 252 299 089
 4480-782 VILA DO CONDE Mail: geral@universalmotors.pt

* References applied only in the UK